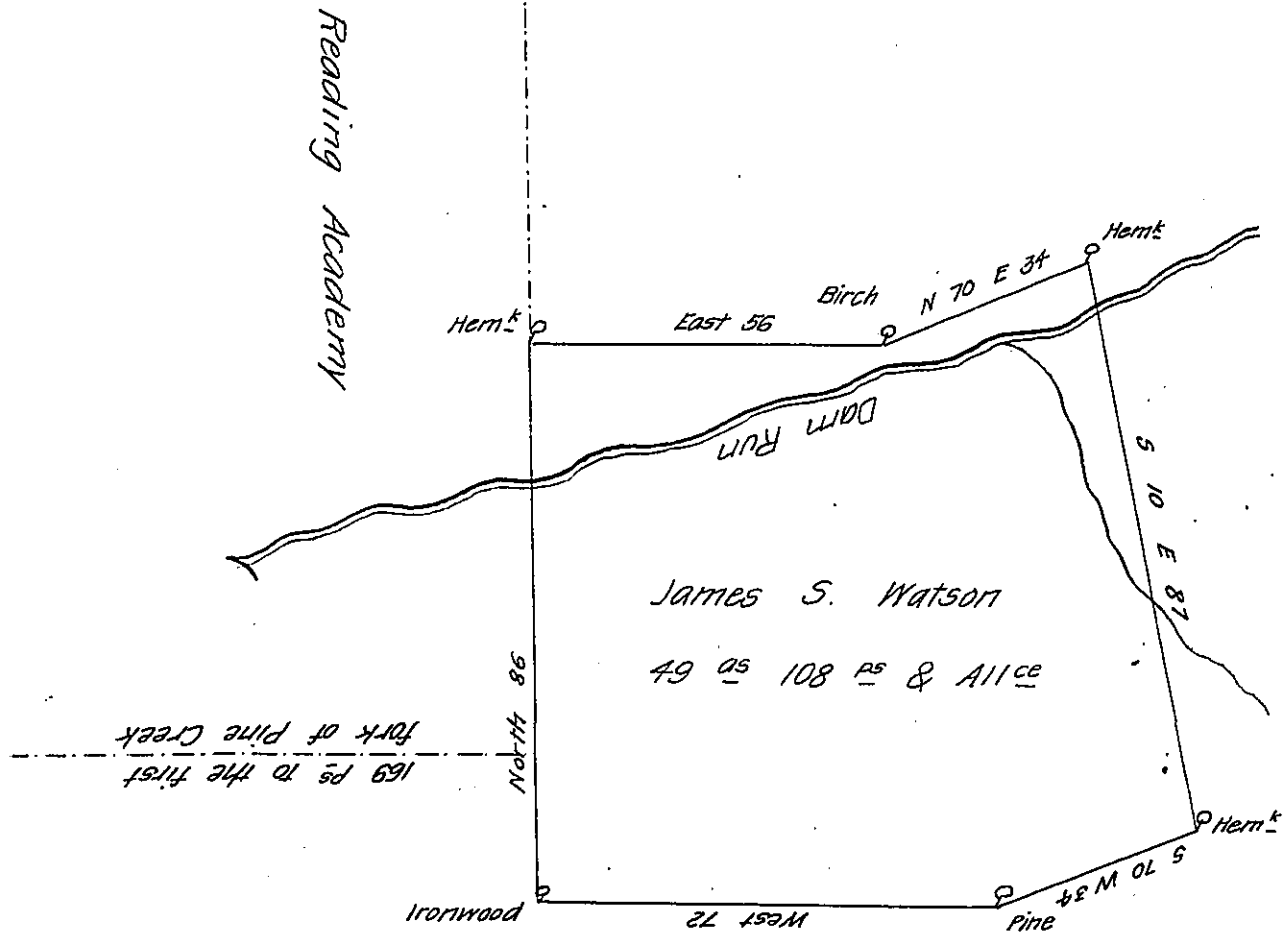


FORM No 1.

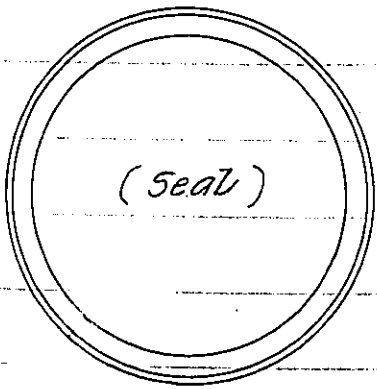


Situate on the east side of the first fork of Pine Creek on Darn Run in Cummings Township Lycoming County and bounded as above described Containing 49 ac 108 ps and allowance of six per cent for Roads &c. Surveyed on the 24th day of May for Henry Forabough and Jos Kelton in pursuance of a warrant in the name of James S. Watson dated Dec^r 3^d 1832

To Jmo Taylor Esq

David Hanna D.S.

Surveyor Gen^l



Examined and approved of by me this 19 Day of December 1836

Robert Hamilton D.S.

I make it 49 ac 89 ps & all. R. Hamilton D.S.

IN TESTIMONY that the above is a copy of the original remaining on file in the Department of Internal Affairs of Pennsylvania, made conformably to an Act of Assembly approved the 16th day of February, 1833, I have hereunto set my Hand and caused the Seal of said Department to be affixed at Harrisburg, this twenty sixth day of August 1907

Henry Houck
Secretary of Internal Affairs.